

# MIC100i SERIES BIOLOGICAL MICROSCOPE



**ISO9001**  
Certification

Design and production  
adheres to ISO9001  
international quality standard.



**ISO14001**  
Certification

Design and production at the UOP  
CORPORATION Ina Plant conforms with  
ISO14001 specifications for  
environmental management systems.



**Chongqing MIC Technology Co.,Ltd**



MAXIMIZING YOUR BENEFITS AND ACHIEVING IT BY OUR MORE RELIABLE, EFFICIENCY AND AFFORDABLE PRODUCTS IS UOP'S RESPONSIBILITY THAT WILL NEVER STOP.

**WITH ITS ELEGANT FIGURE, BRILLIANT UCIS OPTICAL SYSTEM, THOUGHTFUL ERGONOMIC DESIGN AND STABLE MECHANISM, THE UB100i SERIES MICROSCOPES ARE ONE OF OUR CONTRIBUTION TO YOU FOR YOUR ROUTINE TASKS IN MEDICINE, CLINICAL LABORATORIES, PATHOLOGY, AND BIOLOGY.**

102i

103i



Equipped with MIC's UCIS universal infinity independent-achromatic optical system, chromatic aberrations and curvature of field are both ideally corrected over the field of view. And the UCIS objectives own higher NA's producing crisp, clear images with minimal flare.

Benefit from UCIS infinity optics, MIC100i series provide a flexible upgrade path to accommodate various accessories to meet your applications for observations of light field, phase contrast, dark field and polarization. And the MIC100i series optics are perfect for both observations through the eyepiece as well as capturing images with a digital camera or a computer.

High-efficiency heat-sink-device of MIC100i series keeps the microscopes surface at lower temperature even after long time work.

One-piece Construction Design From Arm to Base, Robust and Vibration Resistant.

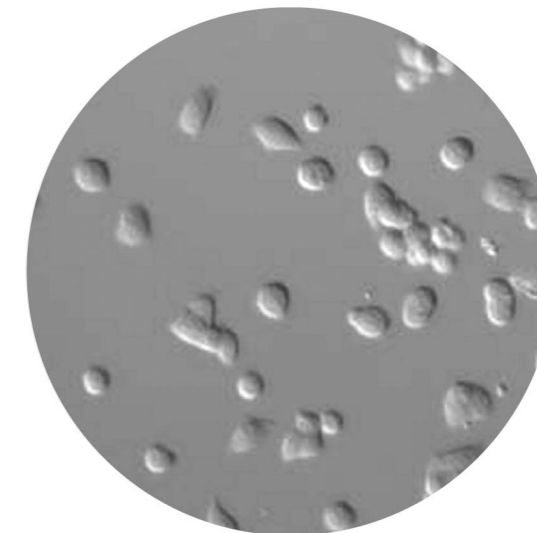


## Objectives

Benefit from brilliant UCIS Infinity Achromatic Optics Design, objectives own higher numerical apertures, capture flat images over the entire field of view with virtually minimum curvature.



Brightfield



Phase-contrast



### High Eyepoint Eyepiece

10X, 21mm High eye point, View field  $\phi$ 18mm, Diopter adjustable, Eye shade optional



### Ergonomic and Flexible Observation Tub

30° inclined, adjustable Interpupillary Distance 52-74mm, 360° rotatable





## Trinocular Tub

Light is split 50/50 by a high quality coated prism, Easy to connect and working with digital camera and computer.



## Abbe Condenser with Color-coded Diaphragm Scale Markings



Abbe condenser NA 1.25 with aperture iris diaphragm and with socket to accommodate PH slide. Condenser center adjustable, height adjustable. Color-coded diaphragm scale markings corresponded with the objectives of different powers.

## Revolving Nosepiece

Quadruple nosepiece, Reversed type.



## Ergonomic Co-axial Coarse and Fine Adjustment Knob



Low positioning, Coaxial coarse and fine focusing knob, Coarse knob tension adjustable, Fine: 0.1mm per rotation, Coarse: 14mm per rotation, Minimum reading: 1 microns on left-side fine focusing knob.

## Grasping Part

Make you more easy to move the microscope.



## Dark Condenser

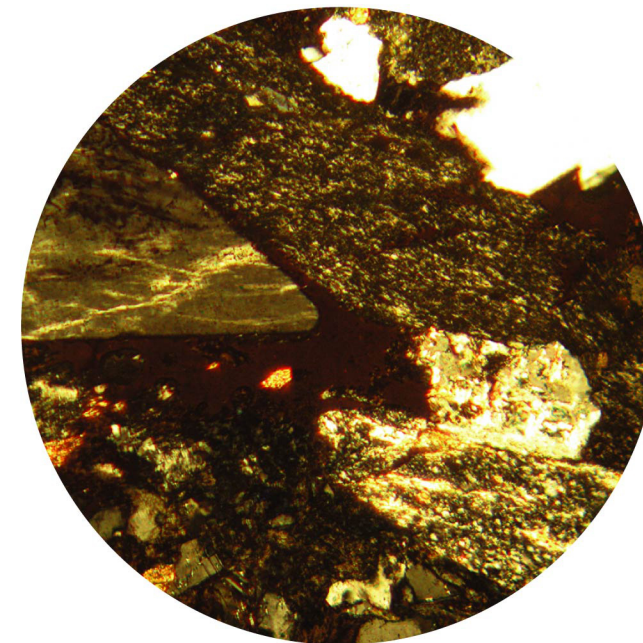
For your dark field observation and can be installed quickly and easily.



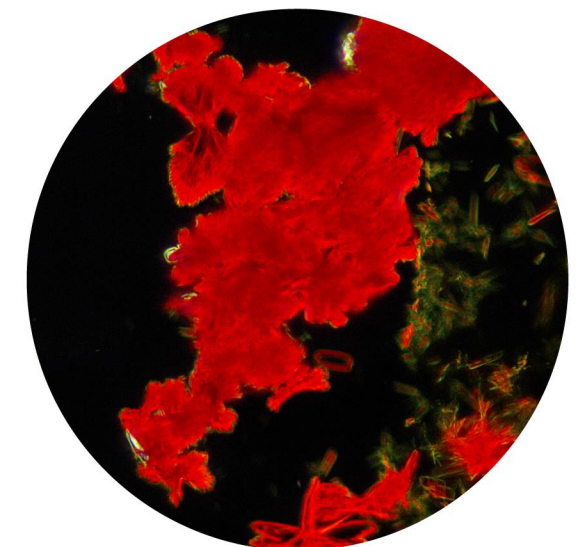
## Bright and Even Illumination



Built-in 6V/20W halogen bulb, High-aperture aspherical lens is equipped in standard Kohler and the optional Kohler with field diaphragm to achieve more bright and even illumination. The brightness intensity control is conveniently located and provides steady even illumination at all levels.



Polarization



Darkfield

## Easy Lamp Replacement

The lamp house cover is easy to open/close by just gripping the cover button and pull/push.

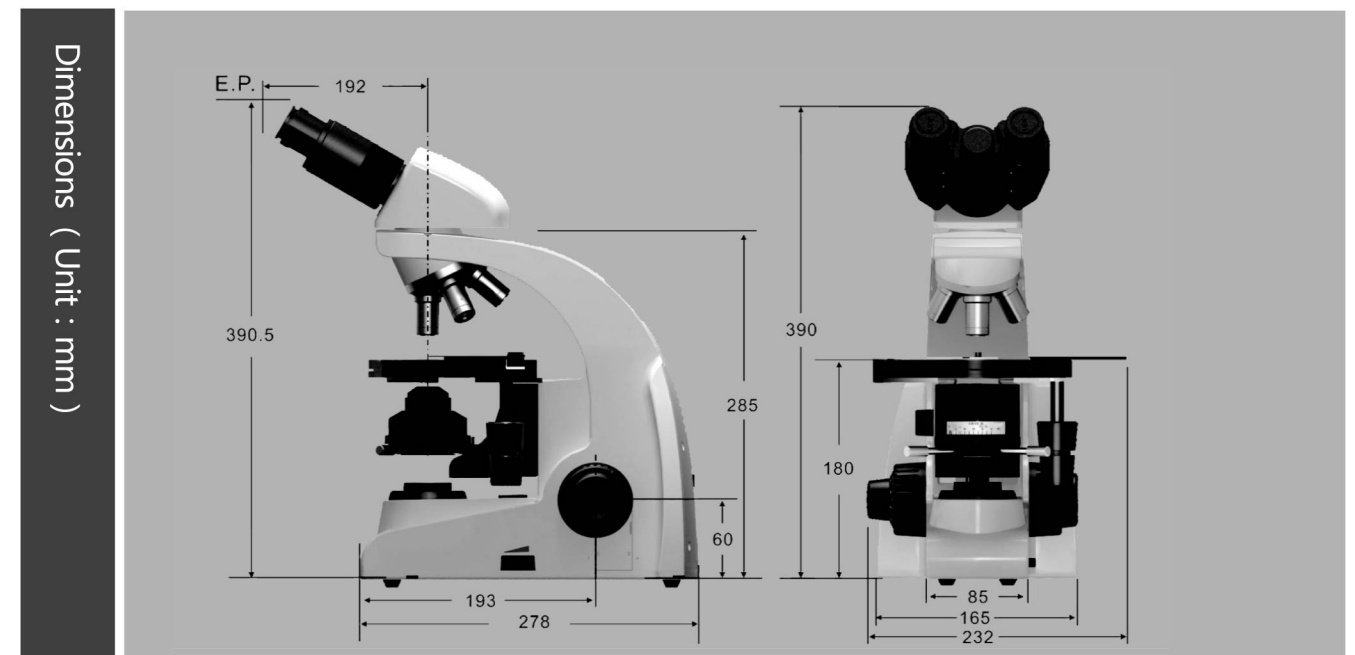
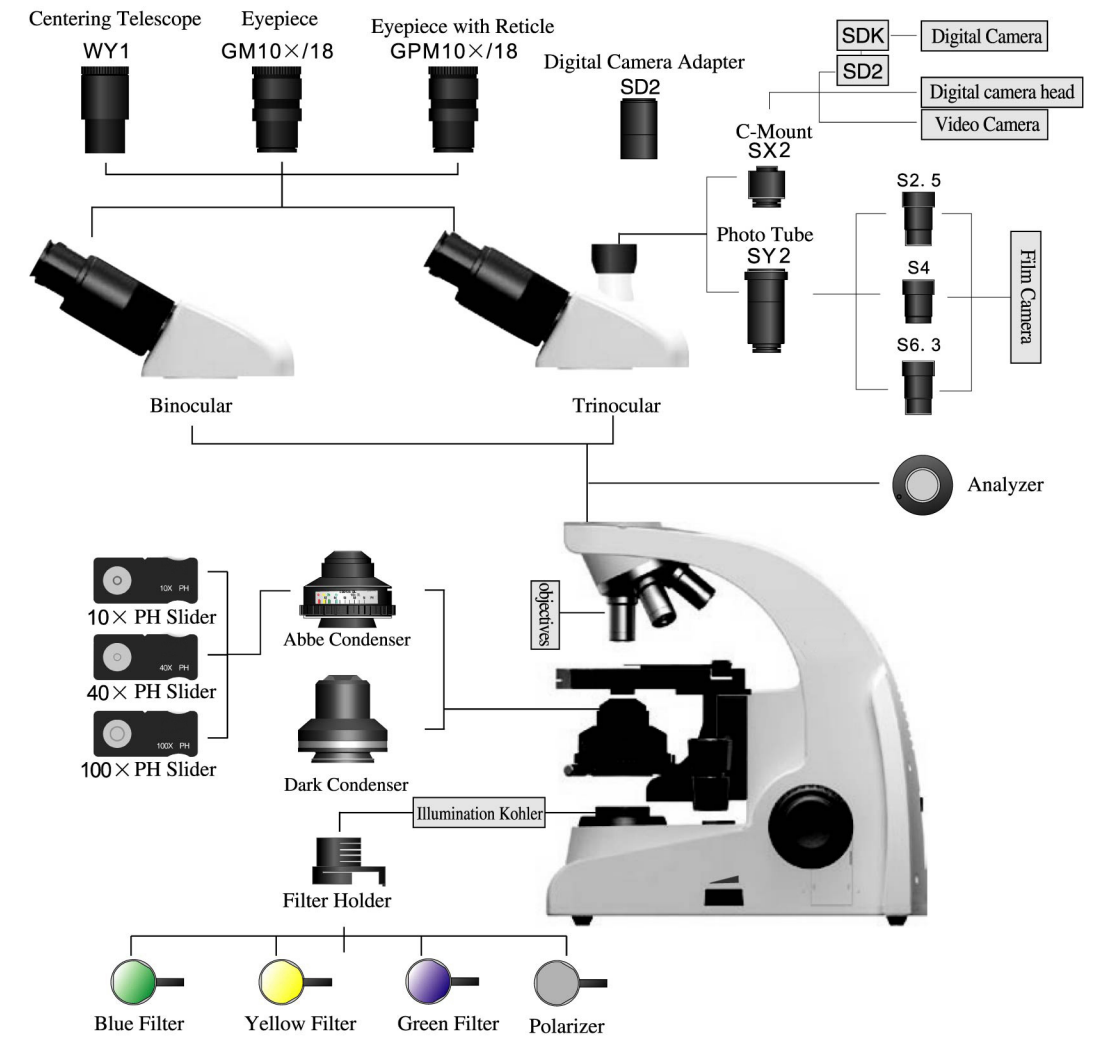
## High-efficiency heat-sink

Limits the surface temperature of the microscope at lower temperature even after more than 24 hours working time and keeps you from burnt.

# Mic 100i Series Microscope Standard Outfits

Parts	Specifications	Mic 102i	Mic103i	order number
Frame	One-piece construction from arm to base.	●	●	100
Optics	UCIS Infinity Independent Achromatic Optical Design			
Seidentopf Observation Tube	Binocular Tube, Interpupillary distance 52-75mm,30°inclined,360° rotatable.	●		MS3
	Binocular Tube, Interpupillary distance 48-75mm,30°inclined,360° rotatable.	○		MS3A
	Trinocular Tube, Interpupillary distance 52-75mm,30°inclined,trinocular light is split 20/80 by a high quality prism.		●	MT3
Plan Eyepiece	Trinocular Tube, Interpupillary distance 48-75mm,30°inclined,trinocular light is split 20/80 by a high quality prism.		○	MT3A
	WF10X/18, High eye-point up to 21mm, diopter adjustable.	●●	●●	E1018PB
Centering Telescope	WF10X/20, High eye-point up to 21mm, diopter adjustable.	○○	○○	E1020PB
	WF16X/14	○○	○○	E1614WA
	WF10X/18(Pointer), High eye-point up to 21mm, diopter adjustable.	○	○	E1018GB
	WF10X/20(Pointer), High eye-point up to 21mm, diopter adjustable.	○	○	E1020GB
	Reticule Eyepiece: CROSSWF10X/18	○	○	E1018RA
	Reticule Eyepiece: CROSSWF10X/20	○	○	E1020RB
Infinity Achromatic Objectives	CTE	○	○	WY2
	4X/0.13 ∞/0.17, WD12.31	●	●	WB-X4A
	10X/0.30 ∞/0.17, WD6.75	●	●	WB-X10A
	40X/0.70 ∞/0.17, WD0.76 (Spring)	●	●	WB-X40A
Infinity Achromatic Phase-Contrast Objectives(positive or negative)	100X/1.25 ∞/0.17, WD0.12 (Spring,Oil)	●	●	WB-X100A
	PH 10X/0.30 ∞/0.17,WD6.75	○	○	WB-XP10A/WB-XP10A
	PH 40X/0.70 ∞/0.17, WD0.76 (Spring)	○	○	WB-XP10A/WB-XP10A
Infinity Plan Objectives	PH 100X/1.25 ∞/0.17, WD0.12 (Spring,Oil)	○	○	WB-XP100A/WB-XP100A
	Plan 4X/0.13 ∞/0.17,WD12.31	○	○	WB-P4A
	Plan 10X/0.30 ∞/0.17,WD4.00	○	○	WB-P10A
	Plan 20X/0.45 ∞/0.17,WD1.24	○	○	WB-P20A
	Plan 40X/0.70 ∞/0.17, WD0.29 (Spring)	○	○	WB-P40A
	Plan 60X/0.80 ∞/0.17, WD0.40 (Spring)	○	○	WB-P60A
Infinity Plan Phase-Contrast Objectives	Plan 100X/1.25 ∞/0.17, WD0.09 (Spring,Oil)	○	○	WB-P100A
	PH Plan 10X/0.30 ∞/0.17,WD4.00	○	○	WB-PP10A/WB-PP10A
	PH Plan 20X/0.45 ∞/0.17,WD1.24	○	○	WB-PP20A/WB-PP20A
	PH Plan 40X/0.70 ∞/0.17,WD0.29 (Spring)	○	○	WB-PP40A/WB-PP40A
Phase-Contrast Slide	PH Plan 60X/0.80 ∞/0.17, WD0.40 (Spring)	○	○	WB-PP60A/WB-PP60A
	PH Plan 100X/1.25 ∞/0.17,WD0.09 (Spring,Oil)	○	○	WB-PP100A/WB-PP100A
	10X PH	○	○	PCB-XP10A
Condenser	40X PH	○	○	PCB-XP40A
	100X PH	○	○	PCB-XP100A
	Abbe condenser: NA 1.25, with iris diaphragm, with socket to accommodate PH-slide. Condenser center adjustable, color-coded diaphragm scale markings coresponded with the objectives of different powers.	●	●	JG3
Stage	Dark Condenser	○	○	JG10
	Mechanical Stage: 156x138mm platform, with X/Y travel of 76x54mm by low-positioned X/Y coaxial control knob, with scale mark and specimen-slide clip, enough space to hold 2 specimen-slide.	○	○	ZT2
Revolving Nosepiece	Mechanical Stage: 142x135mm platform, with X/Y travel of 76x52mm by low-positioned X/Y coaxial control knob, with scale mark and specimen-slide clip, enough space to hold 2 specimen-slide.	●	●	ZT3
	quadruple, inward facing.	●	●	ZQ470
Illumination Kohler	quintuple, inward facing	○	○	ZQ570
	No field diaphragm	●	●	KL2
Electrical Parts	With field diaphragm	○	○	KL3
	For Halogen Bulb Input: 100-240V ~ 0.5A, 47-63Hz, Output:6V 3.4A, Fuse:3.15A, 250V, F φ5×20mm, Halogen Bulb Socket: G4,CE Certified	●	●	DQ3
C-Mount	For LED	○	○	DQL1
	SX2: 0.5X		○	SX2
Digital Camera Adapter	SX3: 1X		●	SX3
	SD2		○	SD2
Photo Tube	SY2		○	SY2
	PE2.5X		○	S2.5
	PE4X		○	S4
Filter	PE6.3X		○	S6.3
	Blue	●	●	LA2-0011
Filter Holder	Green	○	○	LU2-0011
	Yellow	○	○	LH2-0011
	Grass Glass	○	○	LB2-0011
	Filter Holder: (Attached to the Kohler) for more than one filter.	○	○	LA1-0071
Polarization kits	Analyzer	○	○	PQ1
	Polarizer	○	○	PY1
Illumination Bulb	6V20W Osram Halogen Bulb	●	●	BZ-0022A
	3W LED Bulb	○	○	DQL1-1000
Immerse Oil	8ml	●	●	BZ-0027
	Allen Screw Driver φ2mm	●	●	BZ-0018
Power Line	1.8m, CE certified	●	●	BZ-0021
	Package	Inner package: foam, plastic bag; Out Package: Paper box	●	●

Symbol Meaning: ● means standard, ○ means optional



Net weight of Standard Outfits:6.7kg

Gorss Weight of Standard Outfits:9.1kg